

2016 – Present project updated that PAPS are representing

NDT GLOBAL – EGAT KRABI POWER PLANT



In January 2016, the 14.8km x 12" Pipeline from Khlong Rua Tank farm to Krabi Power Plant was inspected by the magnetic Flux leakage (MFL) Linalog HR Plus inspection tool.

The objectives of this inspection are to detect, size and Localize metal loss features, such as internal and external Corrosion and to provide a list of pipe joints, Further information: [www.ndt-global.com](http://www.ndt-global.com)

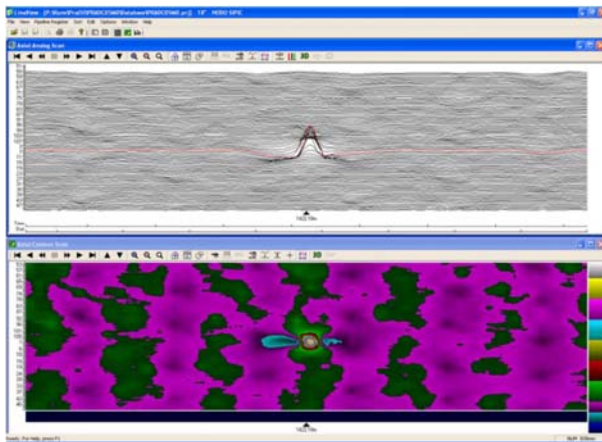


Figure 1 – Example of an External metal loss

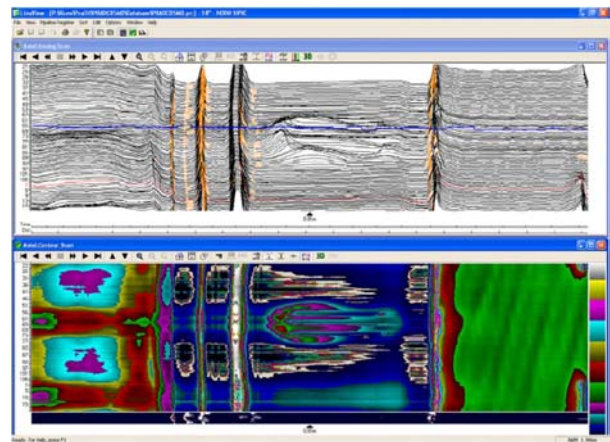


Figure 2 – Example of a T-piece



Figure 3 – Example of a High Resolution MFL tools