



### Ambient Isolation Tools

Ambient Isolation Tools are installed in pipework to provide a physical barrier that prevents the migration of toxic or flammable vapours from the pipe system to the worksite. These tools incorporate a positive mechanical or hydraulic setting that ensures the tool is held securely. (If required, a lock mechanism can also be included to ensure the tool is secure and work party protected against unexpected pressure surges).

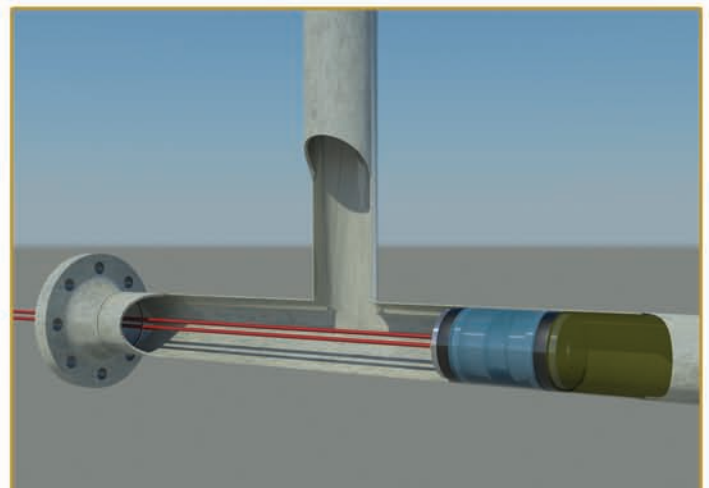
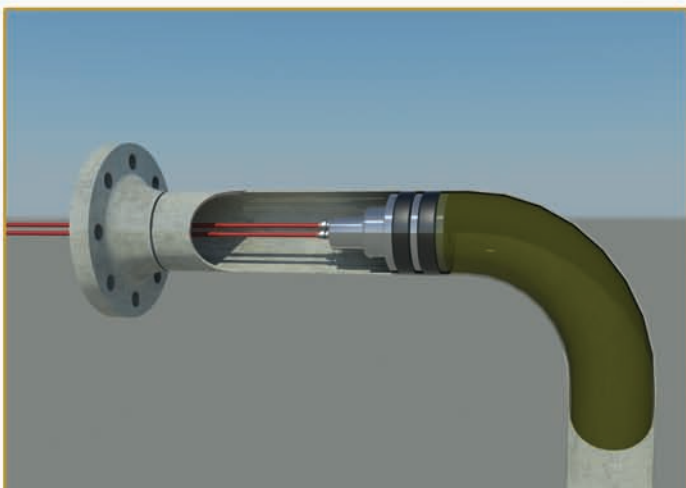
STATS comprehensive range of ancillary equipment is available on a rental basis to support our range of Ambient Isolation Tools. We can also supply competent Field Technicians to provide operators a full turnkey package, delivering a first class maintenance solution for their assets.



#### Key Features:

- Size range: ¾"– 36".
- Pressure range: ambient only.
- Based on Annular Test Tool technology.
- Twin compression elastomer seals.
- Hydraulically actuated over 1½".
- Annular test/ monitor/ bleed between seals.
- Downstream pressure monitor above 3".

Typical Installation



Annular Test Tool used for ambient isolation providing a fluid/ vapour barrier.



### Gas Bags

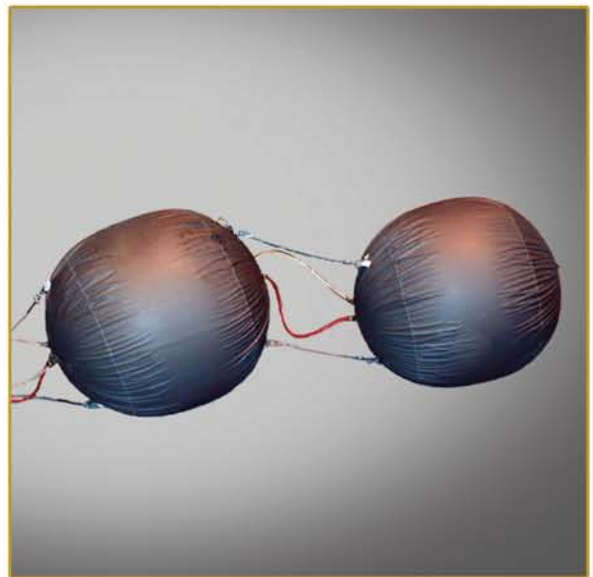
Inflatable Gas Bags create a vapor migration barrier to provide safe worksite conditions allowing repair or modification of a piping system. The bags are usually deployed into hydrocarbon service pipework to provide a barrier against the migration of residual vapours or gases during pipe work intervention operations.

In Gas Bag isolation, the deflated bag is inserted in the pipework to the desired distance from the worksite and inflated with nitrogen to provide a reliable vapour barrier. Since the Gas Bag does not incorporate any anchoring device, the inflated bag cannot withstand any noticeable pressure differential and is only effective in protecting against the migration of vapour. STATS utilise a dual bag configuration as standard. This offers dual seal with annulus monitor to verify safe isolation.

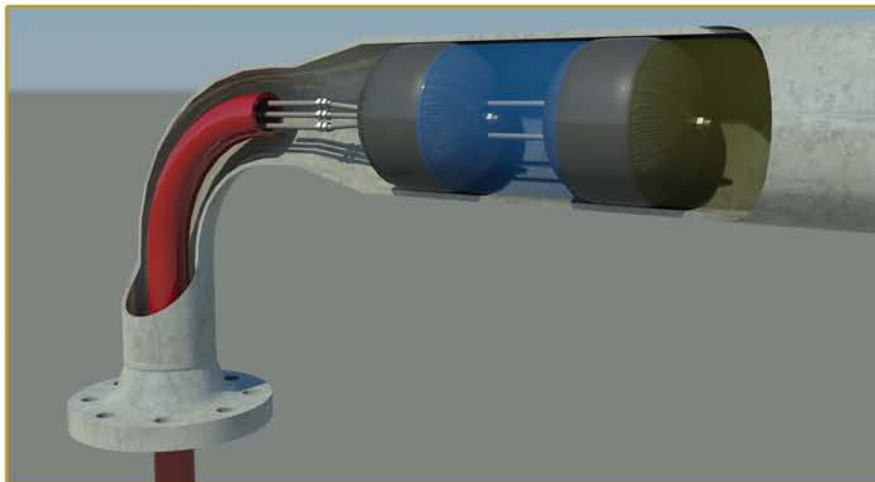
STATS comprehensive range of ancillary equipment is available on a rental basis to support our range of Gas Bags. We can also supply competent Field Technicians to provide operators a full turnkey package, delivering a first class maintenance solution for their assets.

#### Key Features:

- Size range: 2" – 60".
- Pressure range: ambient only.
- Inflatable gas bag inserted into pipe.
- Typically configured as dual bags with the introduction of a positive pressure inert barrier in the annulus and a down-stream bleed/ monitor facility.
- May be installed/ recovered through reduced bore access/ hot-taps.
- Ideal for applications where the pipework is configured with limited or restricted access points.



Typical Installation



Gas bag arranged as a dual vapour barrier to allow hot work.